



∴ There is only one place to be in a chemical emergency...in control.

And that's where you'll be with **SAFER Homeland Responder™**.



SAFER Systems... the global leader in chemical emergency management.

Established in 1981, SAFER Systems has a rich history as the premier provider of chemical emergency management solutions for the private and public sectors. Our initial system implementations focused on fixed facility monitoring and protection. The exceptional features of our technology soon earned our solutions a reputation for being best-in-class. Validating this point is the fact that we have become the system of choice for major chemical and petroleum companies worldwide.

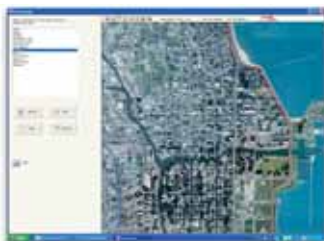
Beginning in 1999, we expanded our product capabilities to embrace our vision of “anywhere/anytime” chemical emergency response to suit those who are not in a fixed facility setting. Our mobile-response product offering was quickly embraced and adopted by all the Class 1 Railroads in North America. This expansion also resulted in system implementations at the State and Provincial levels in the USA and Canada, as well as Civil Defense agencies in Europe and Asia. The evolution of our “anywhere/anytime” mobile applications has led to the development of SAFER Homeland Responder, an exciting new specialized offering for the public hazardous materials incident management sectors.

Fast, Effective Mobile Response **Anywhere, Anytime.**

SAFER Homeland Responder™ provides patented, field-tested technology that adds significant capabilities to the tactical decision making of response teams faced with controlling chemical emergencies. The technology is easy to use and understand. It is customizable for any area in the United States.

Homeland Responder™ is designed for use by National, Regional, and Local Entities providing Emergency Planning, Management and Response, including:

- Government Homeland Security Agencies
- Fire Fighters and other Public First Responders
- Military and Civil Support Teams
- Environmental and Emergency Management Agencies



Using the Site Manager feature in Homeland Responder, response teams can quickly define the incident area and communicate the potential threat zone while en route, regardless of where or when the release occurs. This enables responders to then gener-

ate a detailed incident area map that includes important receptor locations such as schools, hospitals, and municipal buildings. Homeland Responder also incorporates the local geographic profile including mountains, valleys, rivers and other elevation components that might affect the path of a chemical release. Using WeatherBug® Professional, live internet weather data from the station(s) in closest proximity to the incident is seamlessly integrated. In total, this information allows the path of the plume to be quickly tracked and projected. This is vital to giving first responders an upper-hand in determining who should be warned and how the team should approach the incident scene and properly place the staging areas.

Rapid Data Collection & Reporting Enables Better **Threat Assessment & Containment.**

When gauging the potential impact of a chemical threat, knowledge is power. The more you know, the better prepared you are to defend against and handle projected scenarios. This is especially true in the chaotic and frantic aftermath of an actual chemical release, where timely and accurate information are critically important to saving lives and resources. SAFER Homeland Responder™ provides this urgent information faster and more efficiently than any other mobile response product on the market.

Homeland Responder™ can be set up on any site quickly to detect and react to an accidental or intentional release. Once in place, it instantly begins aggregating real-time information from gas and meteorological sensors as well as chemical and GIS databases. With blazing speed, sophisticated algorithms such as our patented Advanced Back Calculation (ABC) integrate and analyze this data, ensuring all factors are considered, including:

- Local weather, wind stability, direction and speed
- Source, rate, type and location of release
 - Gas, liquid or both
 - Ground level or elevated
 - Instantaneous, transient, continuous, or two phase; fire and explosion
- Chemical properties and composition
- Thermal radiation
- Blast overpressure
- Specialized chemical reactivity, including HF and TiCl₄
- GIS Data
 - City Maps - Schools/Hospitals/City Agencies/Places of interest
- Topography
 - How landscape impacts plume movement and dispersion based on site-specific conditions
- Composition of releases with multiple gases or liquids

The result is that within minutes of set up, you'll view highly accurate models and reports on current and projected scenarios in real time. Whether managing a threat or an actual incident, it's the information you need to effectively assess risk, develop a plan, deploy resources and make the right decisions.

It's about tools that improve real-time decision making, enabling **quicker control & command** of volatile situations so no harm comes to life.

∴ **Homeland Responder™ is Designed to Bring Calm, Confidence and Ease to the Process of Rapidly Neutralizing a Dangerous Situation.**

Any release, small or large, of hazardous material is an emergency situation. Ensuring the safety of those in near proximity to the incident becomes priority one. The size of the release typically has a direct bearing on the intensity and complexity of the response. In these situations, when adrenaline is surging and emergency responders are scrambling, the most important factor to consider is the "human" one.

To us this means that the technology must be designed around how people will most intuitively want to use the tools in this physical and emotional setting. After all, solutions that require multiple manual procedures for the collection, analysis, reporting and sharing of data may perform okay in tests. However, when the danger and threat to life is real and every second counts, these solutions typically add tension and complexity to the process, while reducing response times. This is unacceptable and why ensuring ease of operation, especially when operators are under stress, is mission critical to our philosophy.

Access to Critical Data is Made Simple.

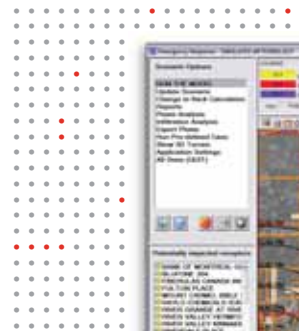
We have gone to great lengths to "hide" the sophistication and complexity of our systems. Most data aggregation and system functionality is automated, so all relevant data is assembled, analyzed, reported and visualized with a few mouse clicks. The ability to share or email up-to-date incident information is built-in and equally basic. The overall system design enables a wide variety of users with varying skill-sets to quickly learn how to effectively use it, even when faced with the stress of a chemical emergency.

Complete "One Screen Command" Visualization

All the data in the world is useless if its scope and impact can't be quickly grasped. For this reason we've made it possible to take command with one computer screen. All primary data fields and graphics are displayed in an easy to view arrangement. Audible alarms and light indicators provide further prompts and intuitive guidance. More detailed reports and secondary data are never more than a click or two away.

Advanced "Plume-Centric" Modeling

It's the most basic request from someone in charge of an incident when there is a significant release. They want to know where the plume is and its projected impact. Homeland Responder's advanced plume modeling functionality addresses this request better than any other product. It automatically collects and analyzes data from gas sensors and other sources relating to the rate of release, weather, terrain, chemical properties and GIS. In turn, it uses these real-time data feeds to generate models of the plume's direction and concentrations that are self-validated for accuracy. The on-screen rendering of the plume model is equally impressive. Color-coding makes it easy to grasp critical data "at-a-glance." The graphics are also "Plume-Centric." The value of this becomes clear when comparing it to other plume modeling programs. They predominantly display the plume as a small dot on a large scale map that spans miles. When zooming in, the plume model loses resolution and becomes pixilated, making it nearly impossible to see the exact boundaries of impact. In contrast, Homeland Responder automatically scales the map to the size and shape of the plume, making visibility of its current and projected impact boundaries very clear.



Validated Documentation with Historical Archiving

Whether for documenting a full-scale release or analyzing the validity of an odor complaint, SAFER Systems technology has you covered. Our systems automatically collect, record and archive all the relevant meteorological and sensor data. This information can be used to substantiate the rationale for emergency response actions when they are evaluated or reviewed after the fact. It can also be used to determine the legitimacy of claims related to the incident.





The Ease and Speed of Access to Accurate Real-time Data Enables Critical Decisions to be Made Quickly & Reliably.

- Where can the emergency command post be safely established?
- What is the source and rate of release?
- Will the release reach the community or industrial neighbors and at what concentration levels?
- Should you evacuate or shelter in place?
- Where can first responders be deployed safely?
- What is the best approach to the scene?
- Where should sampling occur?
- How will the weather and terrain impact the release?
- What roads should be closed?
- Which public venues and residential areas may be at risk?
- What are primary and secondary areas of concern?

Homeland Responder is the Right Choice for the Well-Being of Your Community & Venue Protection.

There is no better way to be prepared to control a chemical emergency. Homeland Responder provides a 24 hour a day mobile response tool that's always ready to help you make the right decisions before, during and after an incident.

It also is an excellent tool for temporary venue protection, where high profile events are occurring. It ensures tactical teams are prepared to assess and handle potential chemical threats. In total, Homeland Responder is a best-in-class solution for effective:

- Emergency Response Planning & Management
- Hazard Assessment & Venue Protection
- Modeling of Accidental & Intentional Releases
- Educational Purposes
- Risk Management Planning
- Regulatory Modeling & Reporting Requirements
- Validation of Claims

We believe the exceptional caliber of our clients says a lot about us.



Homeland Responder is Proven Effective in These Environments:

- Homeland Protection & Emergency Response
- Venue Protection
- Chemical Transportation
- Ports
- Local, State, Regional and National Civil Defense
- Air Quality Control/Environmental Protection

Homeland Responder Comes with World-Class Support.

We conduct comprehensive training for those who will be using the system. We also offer unsurpassed support with technical experts available 24/7 who you can call for routine advice or even guidance in an emergency. In addition, as a SAFER Systems' customer, you are eligible to join our Support and Upgrade Services Program. This cost-effective, comprehensive program provides you with access to:

- Special training, group meetings and technology sessions for Users
- Software updates, fixes and feature improvements
- Remote desktop support (modeling, upgrades and much more)
- Full off-site backups of customer databases such as Map, GIS and Receptor

The result is a complete, best-in-class solution that integrates hardware, software and support in a manner that optimizes your ability to effectively manage chemical emergencies, anywhere, anytime.



The advanced features of SAFER Homeland Responder™ make this a Best-in-Class solution for mobile response.

SAFER Systems is a uniquely focused organization, dedicated solely to producing chemical emergency management solutions that define the industry standard. The launch of Homeland Responder validates this. It brings to market an unrivaled set of innovative features unavailable in any other single mobile response solution, including:

Internet Weather

Homeland Responder offers the ability to incorporate streaming weather feeds from around the world via Weatherbug® Professional. This fills a critical gap for national, regional, state and county responders after they get the call and are travelling to the scene. It helps with early analysis, enabling resource staging and deployment decisions to be made en route for a faster, more effective response.

Google Earth/Google Maps

Homeland Responder can display a geocoded plume within the mapping and GIS tools offered by Google™. This creates simple and accurate visualization of an event that can be shared via email or through a live network connection. Multiple emergency responders can then share and work from accurate information, accessible from basic widely used tools.

Source Area Locator™ (patent pending)

In some cases, emergency responders are aware there is a release but aren't sure where it's coming from. Our Source Area Locator solves this by using advanced algorithms to analyze real-time meteorological data in conjunction with chemical release data being fed in by gas sensors. Similar to how our system uses this data to project the path of a plume moving forward, it can do the same in reverse to identify the source area of the release. This information puts release neutralization and community and venue protection on the fast track. Those in charge will instantly have the knowledge to determine ideal evacuation routes, shelter options and resource deployment.

Open Path Technology

Homeland Responder can integrate data feeds from Open Path sensors. This functionality allows our system to define the chemical composition of any gaseous stream, even when it's composed of multiple components. Our Open Path system is also highly sensitive, measuring chemical concentrations across a 200 meter open path of air in the ppb levels. This technology is an excellent protection measure. Once in place, it can monitor an area of concern, enabling alarms to be automatically triggered when defined levels are exceeded.

Our customers have **good things to say...**

"CTEH responds to hazardous events that occur at anytime and anywhere across North America. SAFER Systems helps us overcome this significant logistics challenge. We utilize SAFER Systems as an essential part of our event management strategy, primarily for consequence communication, monitoring strategies, and event documentation with incident commanders and Government agencies."

— *Dr. Glenn Millner, CTEH, Little Rock, Arkansas*

"DuPont, Sabine River has utilized SAFER Systems as a key part of our Emergency Response Program and management of preparedness since 1988. We are proud that we can respond to an alarm within two (2) minutes with initial downwind assessments immediately communicated to our plant staff."

— *Richard Hicks, DuPont Chemical, Orange, Texas*

"Just watch what happens. You can see how the system models the plume's dispersion across the site. With a few keystrokes, the multi-colored cloud of gas stops in mid-air...or mid-pixel, in this case."

— *Don Watson, Dow Chemical Canada Emergency Services and Security*



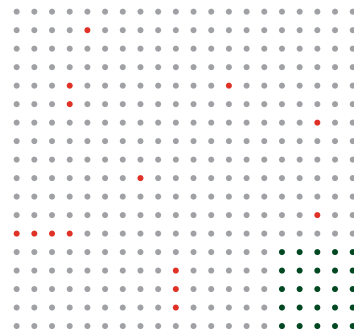
Worldwide Headquarters

SAFER Systems

5284 Adolfo Road, Suite 100
Camarillo, CA 93012 USA
800-621-7237 USA/CANADA
805-383-9711 GLOBAL
805-383-6344 Fax

Email: sales@safersystem.com USA

Email: safer@safersystem.com GLOBAL



North America

SAFER Systems Worldwide Sales

Michael Teague
Vice President, Global Sales
14 Kelliwood Courts Circle
Katy, TX 77450 USA
800-621-7237 / 805-383-9711, ext. 140
281-578-1631 Fax
Email: safer@safersystem.com

SAFER Systems USA

James Gremillion
Regional Business Manager
5 Lullwater Place
The Woodlands, TX 77381 USA
800-621-7237 / 805-383-9711, ext. 144
281-864-4359 Fax
Email: saferusa@safersystem.com

SAFER Systems Canada

Bob Gerow
Regional Business Manager
23 Coachman Way
Sherwood Park, Alberta T8H 1C5, Canada
800-621-7237, ext. 143 USA/CANADA
805-383-9711, ext. 143 GLOBAL
780-669-7060 Fax, 780-970-7879 Cell
Email: safercanada@safersystem.com

International

SAFER Systems Europe

Eric Quatreuille
Regional Business Manager
Buenvventura Munoz 15, AT-2
08018 Barcelona - SPAIN
805-383-9711, ext. 145
+34 93 320 92 43 Phone
+34 687 811 113 Cell
+34 93 309 86 60 Fax
Email: safereurope@safersystem.com

SAFER Systems China

Email: saferchina@safersystem.com

SAFER Systems Japan

Email: saferjapan@safersystem.com

SAFER Systems Central/South America

Email: saferamericas@safersystem.com

SAFER Systems has authorized agents throughout the world. Ask your regional business manager or contact our Worldwide Sales office for more information.

For more details on our products or to set up a demonstration, please call:
800-621-7237 USA/CANADA
805-383-9711 GLOBAL

www.safersystem.com

